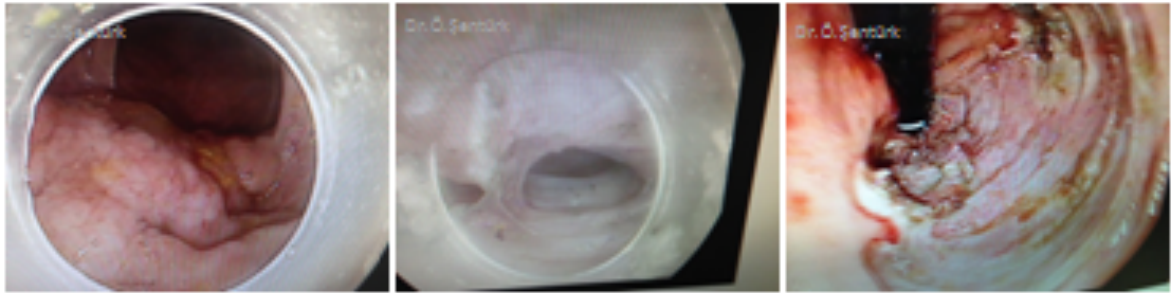
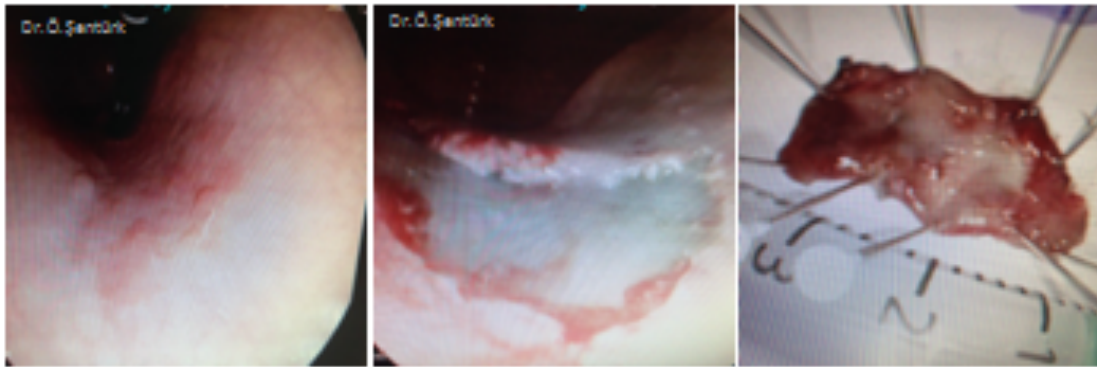


Endoskopik Submukozal Diseksiyon (ESD)

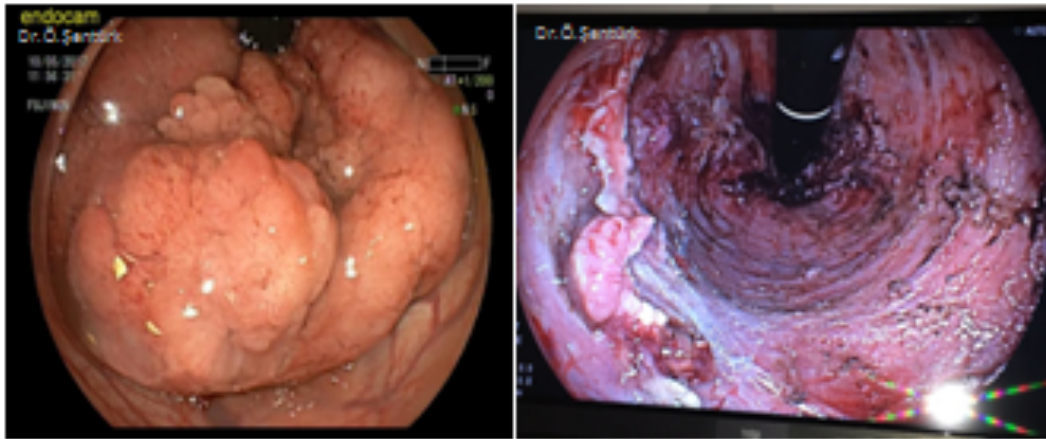
1. Rektumda "Lateral Spreading Tumör-Granüler Tip" (LST-G)



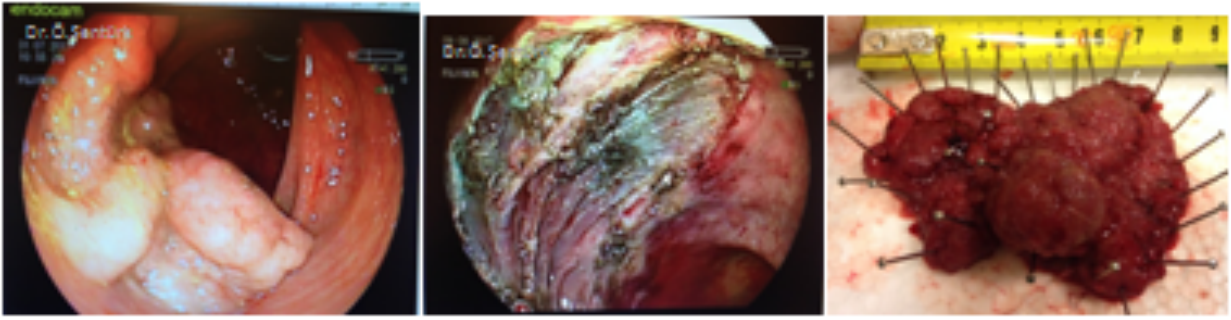
2. Midede erken evre adenokanser



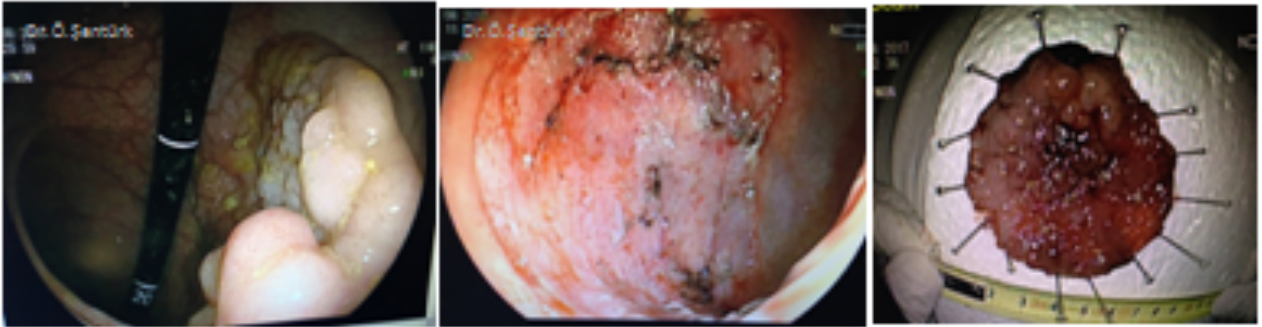
3. Rektum anal kanal girişinden itibaren yaklaşık 330 derece ve 10cm LST-G



4. Rektumda LST-G



5. Rektumda LST-G



6. Sigmoid kolonda LST-G

